

CERTIFICATE OF LOCATION OF GOVERNMENT CORNER

NORTH 1/4 Corner of Section 17, Township 106N, Range 43W, 5TH P.M.

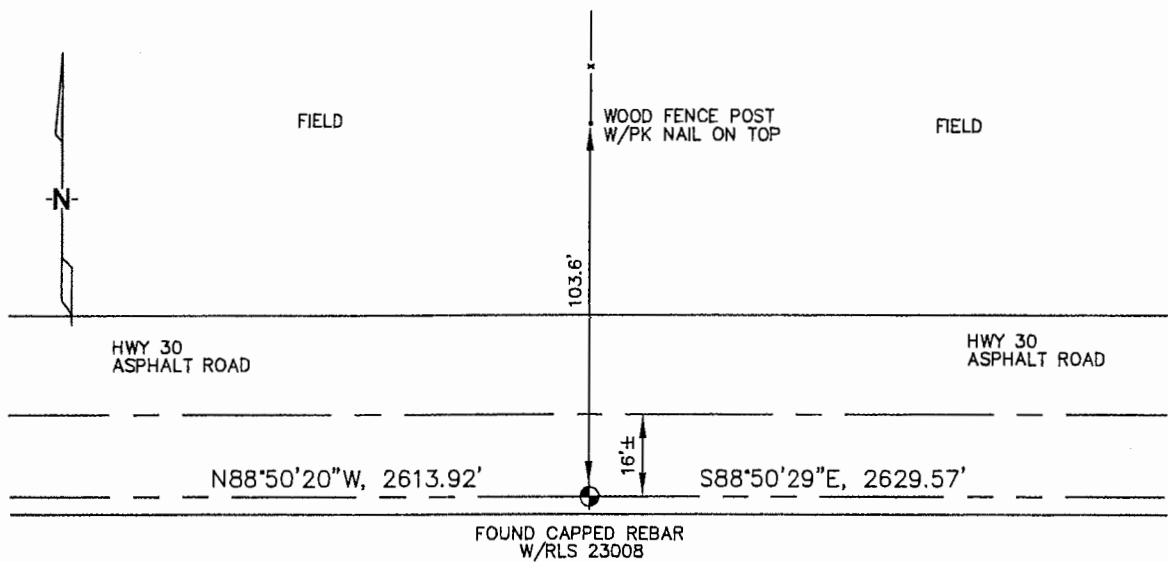
STATE OF MINNESOTA, County of MURRAY

At the corner location shown on the sketch :

On 3/22/2006 found A REBAR WITH CAP: RLS 23008, IN SHOULDER
16'± SOUTH FROM C/L OF TRUNK HIGHWAY 30.
 left monument as found, lowered monument, removed monument (explain)

On _____ set _____

Sketch of reference ties



N: 696,885.30
E: 2,089,423.36
MN SOUTH ZONE, NAD 83
NOT TO SCALE

Statement of evidence relative to this corner location is on back page

I hereby certify that this document and the data contained herein was prepared by me or under my direct supervision.

Thomas V. Zeff 5/22/06
Thomas V. Zeff Date

Registration No. 44563

Land Surveyor, Professional Engineer

County Surveyor, County Engineer

OFFICE OF THE COUNTY RECORDER

County of _____

SEP 28 2006

I hereby certify that this document was filed in the Co. Recorders office at _____ .M. on the day of _____ A.D., 20

County Recorder James V. Johnson
By _____, Deputy

DOCUMENT NO. _____

STATEMENT OF EVIDENCE:

NORTH 1/4 CORNER, SECTION 17, T. 106 N., R. 43 W.,
MURRAY COUNTY, MINNESOTA

- 1866 J.W. Bishop, US. Deputy Surveyor, monumented corner.
- ? Date MN DOT R/W Map for Trunk Highway 30, calls for 1/4 corner being at the intersection of the road (east & west) and the fence (north) and being 17.0' south from Trunk Highway C/L at POT Sta 719+81.8.
- 3/22/2006 Ulteig Engineers, Inc., Survey Crew, Dennis Lavallie Party Chief, found a rebar with cap: RLS 23008, 4" deep, in shoulder of Trunk Highway 30, 16'± south from C/L of asphalt pavement, opposite a fence line running north.
Ties: N-103.6' to PK nail in wood fence post;
E-2629.57' to NE corner, Section 17;
W-2613.92' to NW corner, Section 17.